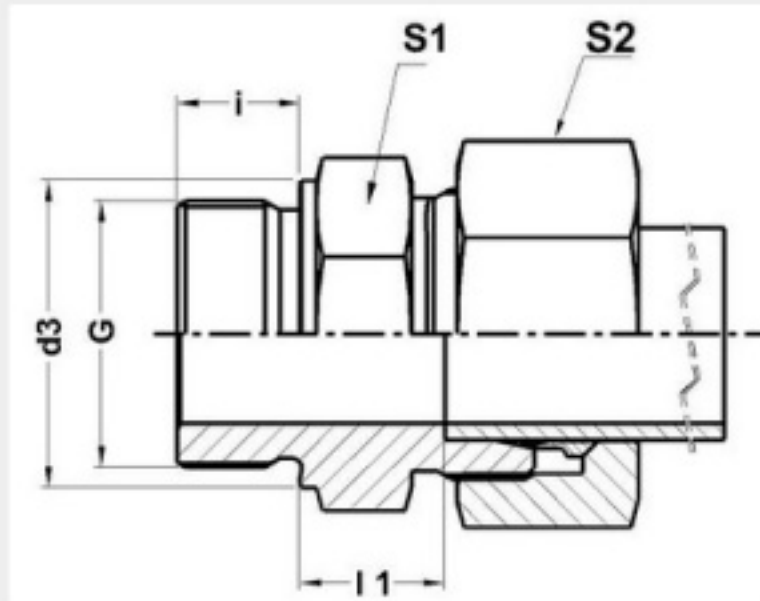


METRIC BITE TYPE FITTINGS

GE-LM - STRAIGHT MALE STUD COUPLING

Male Stud Thread METRIC;Cutting Face DIN 3852 Form 'B';(On Request Form 'A' also Available)



ORIENT ENGINEERING WORKS

Part No.	Series	Tube OD	l1	i	S2	S1	d3	G
GE 06 LM	Light-250 Bar	6	8.5	8	14	14	14	M10 X 1.0
GE 08 LM	Light-250 Bar	8	10	12	17	17	17	M12 X 1.5
GE 08 LM	Light-250 Bar	8	11.5	12	17	24	23	M18 X 1.5
GE 10 LM	Light-250 Bar	10	11	12	19	19	19	M14 X 1.5
GE 10 LM	Light-250 Bar	10	12.5	12	19	22	21	M16 X 1.5
GE 10 LM	Light-250 Bar	10	12.5	12	19	24	23	M18 X 1.5
GE 10 LM	Light-250 Bar	10	14	14	19	27	27	M22 X 1.5
GE 12 LM	Light-250 Bar	12	11	12	22	19	19	M14 X 1.5
GE 12 LM	Light-250 Bar	12	12.5	12	22	22	21	M16 X 1.5
GE 12 LM	Light-250 Bar	12	12.5	12	22	24	23	M18 X 1.5
GE 12 LM	Light-250 Bar	12	14	14	22	27	27	M22 X 1.5
GE 15 LM	Light-250 Bar	15	13	12	27	24	21	M16 X 1.5
GE 15 LM	Light-250 Bar	15	13.5	12	27	24	23	M18 X 1.5
GE 15 LM	Light-250 Bar	15	15	14	27	27	27	M22 X 1.5
GE 18 LM	Light-160 Bar	18	14	12	32	27	23	M18 X 1.5